

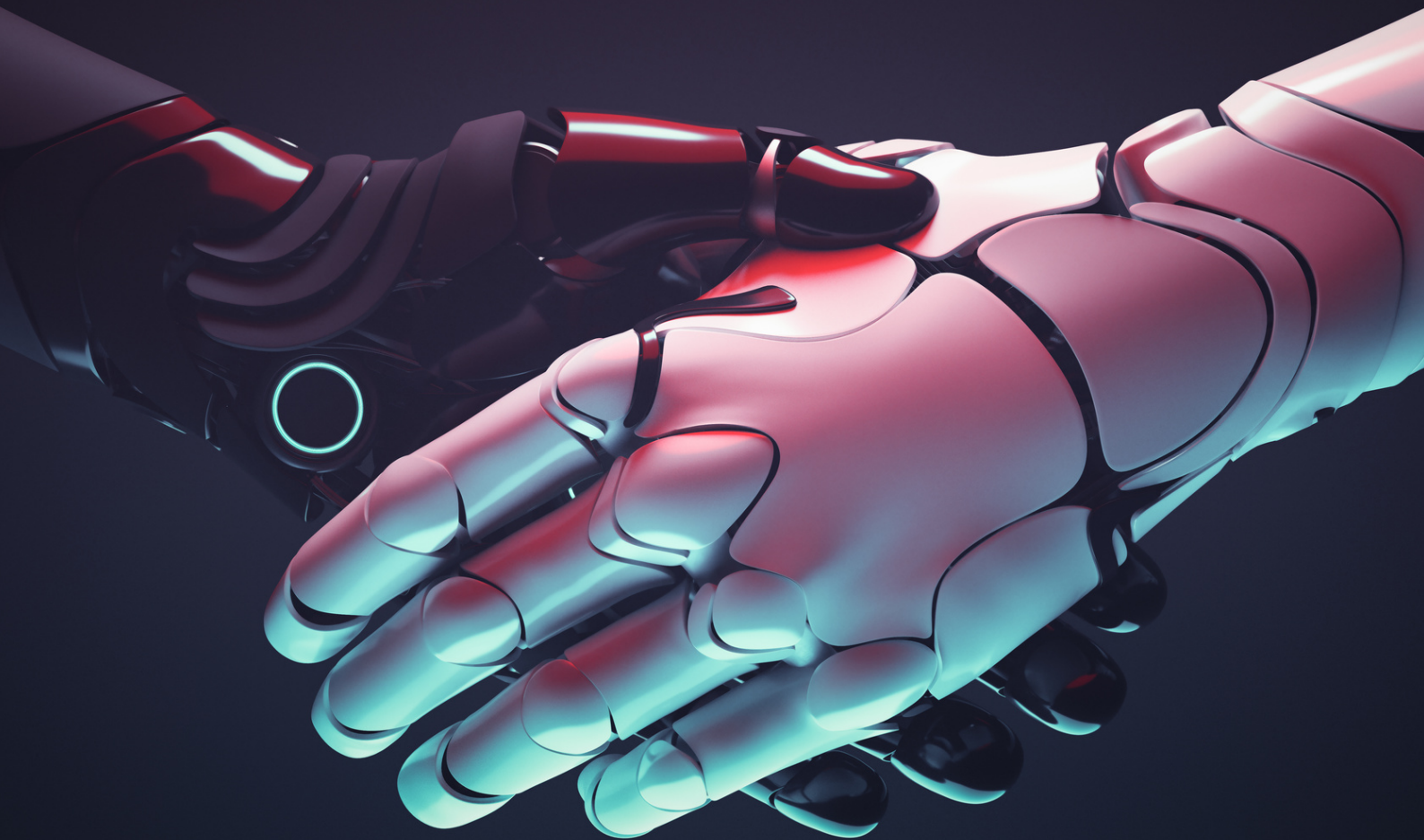


Co-funded by the
Erasmus+ Programme
of the European Union



ESCAPE DISABWARE

MATERIALS



**ESCAPE RACISM: TOOLBOX TO PROMOTE
INCLUSIVE COMMUNITIES**



CONTENT

In this document you will find every printable material that you need to set up the "Escape Disaware" Escape Room, and some links to materials too.

1. Initial poster
2. Composers collage
3. World map
4. Sign language alphabet
5. Sign language card
6. Batteries order
7. Colors card
8. Puzzle
9. Letter grid
10. Code in Braille
11. Braille translation
12. Videoclip (link)
13. Matrixes
14. Final video



INITIAL POSTER

ESCAPE ROOM DISABWARE

2200, a year of new hopes and opportunities, or so they say. Technology is no longer a tool, but part of our souls. People have decided to enhance their capabilities by installing hardware in their own bodies. But at what cost? Technology is now embedded in people's bodies and people's communication and capabilities are enhanced by it.

All of these implants require upgrades, driven by Master Artificial Intelligence (M.A.I). The problem occurs when the bodies of people with disabilities are no longer suitable for the latest upgrades of their implants. Faced with this situation, M.A.I decided to separate these people from the rest of society as they are not adapted to the new technology it is building and thus for the design of a new society. The effect of this virus is commonly known as DISABWARE.

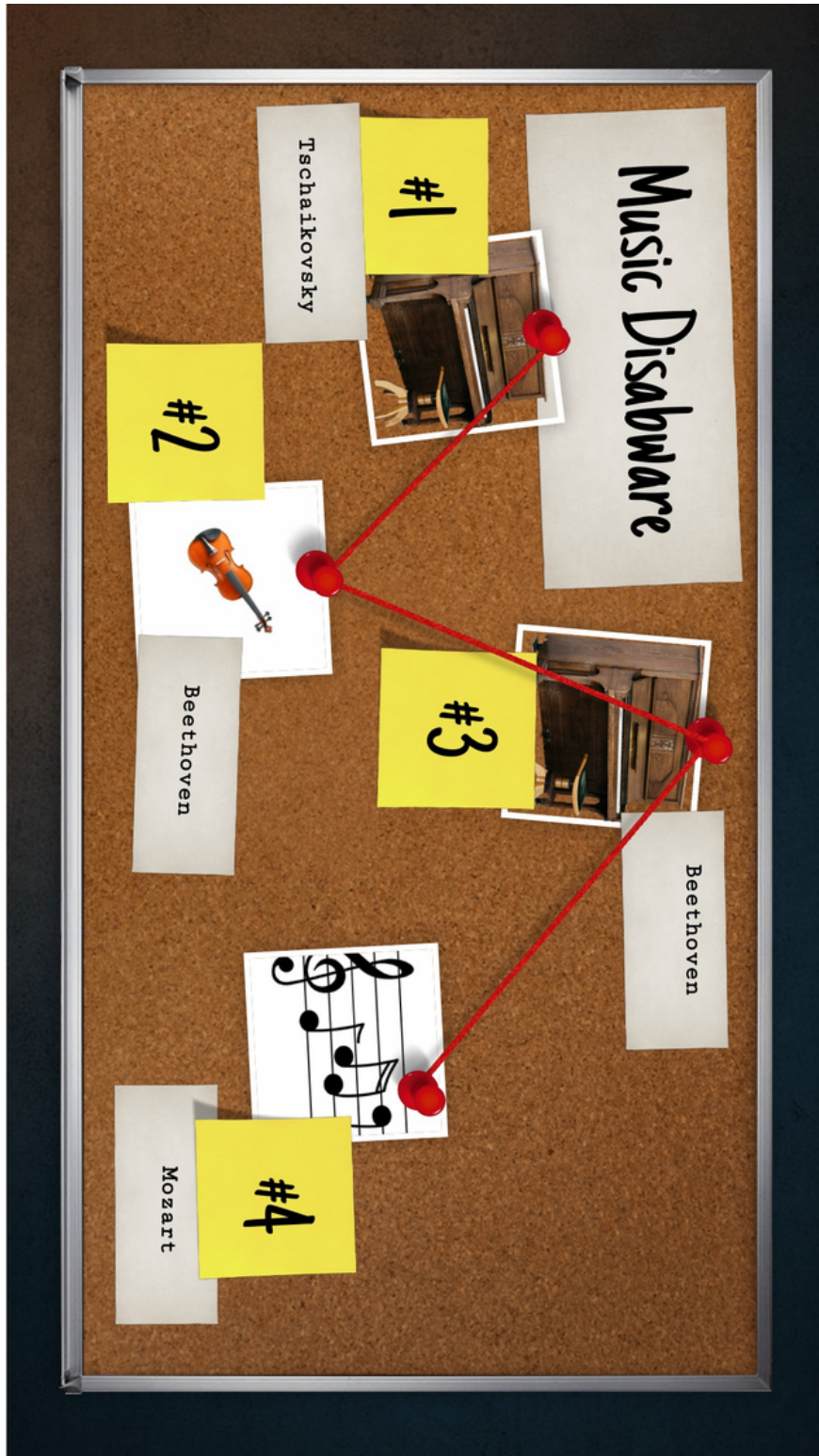
People still do not know its cause and those who do not experience this virus do not care about the problem.

We need to modify M.A.I. so that we can create a more inclusive society where no one is left behind. Someone has already tried, Shift Xi, a computer scientist who discovered this conspiracy, but she has disappeared. Now you are about to enter her house where once inside, you will not be able to leave until you modify the M.A.I. kernel and change the course of humanity.





COMPOSERS COLLAGE



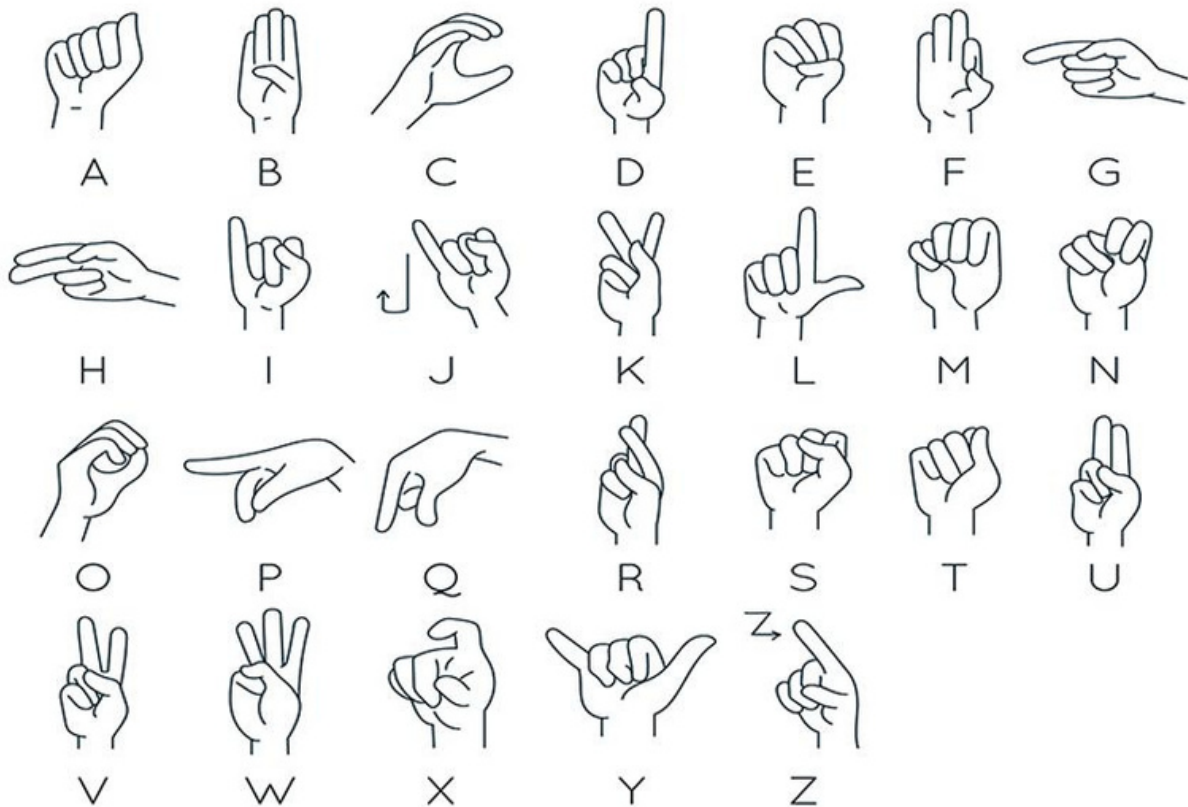


WORLD MAP



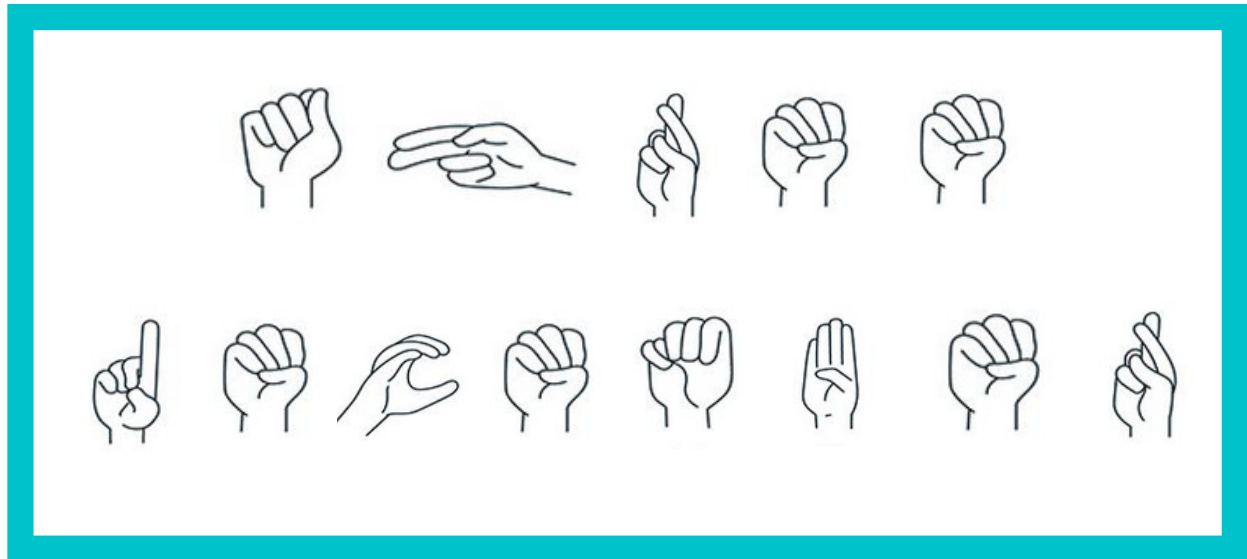


SIGN LANGUAGE ALPHABET





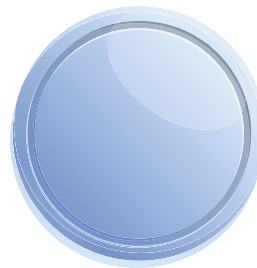
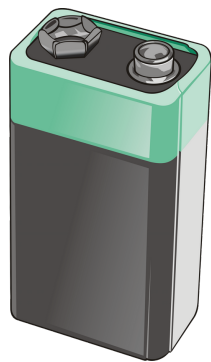
SIGN LANGUAGE CARD





BATTERIES ORDER

Batteries don't work on the XXII Century!

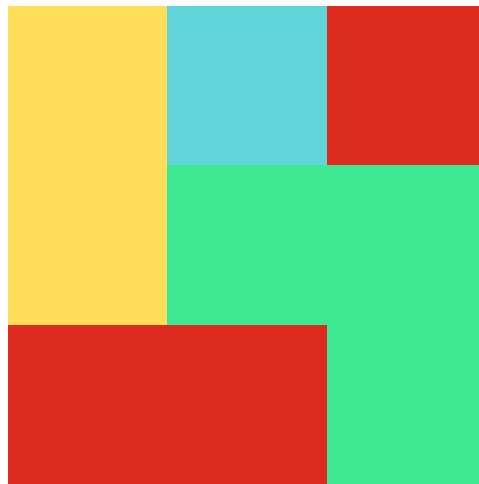




Co-funded by the
Erasmus+ Programme
of the European Union



COLORS CARD





Co-funded by the
Erasmus+ Programme
of the European Union

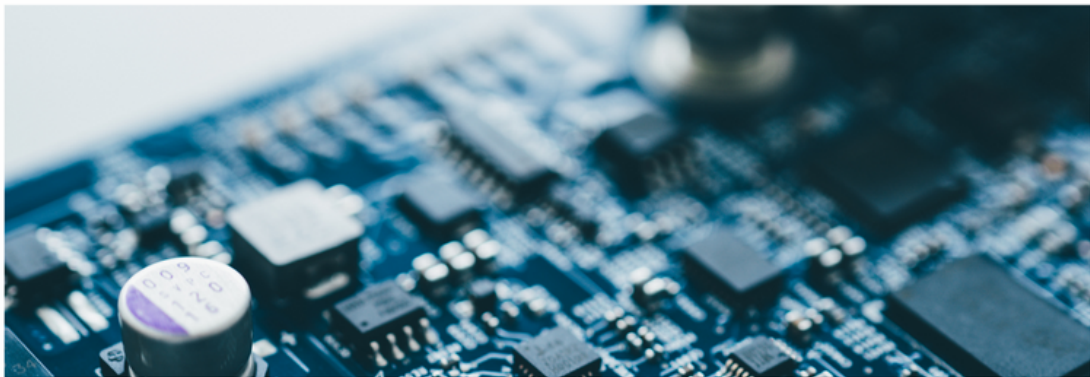


PUZZLE

NUMBER 49, 19 SEPTEMBER 2200

THE VOICE OF XVIII

The newspaper of our time



**NEW
CONTROVERSY
OVER
HARDWARE
INSTALLATIONS**

Ultrasonic ear implants
Cell replacement
Cosmetic foot surgery

ARE WE CHANGING OUR BODIES BEYOND OUR MEANS?

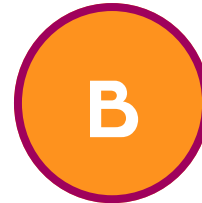
By Jimena Nguema

In recent years, it has been observed that body **h**Ardware installations are not only increasing, but with the new Disabware virus, the population is obs**E**ssed with receiving computer updates from Artificial Intelligence as soon as **P**ossible.

In the old days, before body **H**ardware installation operations began in the year 2137, people's bodies did not receive any installations, and according to reliable historical studies, they could live their entire lives without **R**eceiving any changes to their bodies. Can you imagine now how they would live without their constant updates? Would the Disabware virus exist if it were **N**ot for our need for perfection in our abilities?



LETTER GRID

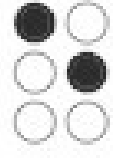
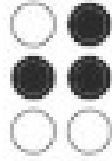




Co-funded by the
Erasmus+ Programme
of the European Union



CODE IN BRAILLE





BRAILLE TRANSLATION

0	1	2	3	4	5	6	7	8	9



Co-funded by the
Erasmus+ Programme
of the European Union



VIDEOCLIP

"Technologic" by Daft Punk
Click [here](#) to access the video.





MATRIXES

F3	F3	F3
F3	B4	F3
F3	F3	F3
B4	E9	F3
E2	C2	F3

E9	C3	D4
B4	E3	D4
C4	C2	D4
C2	E9	D4
C5	B7	D4

A1	A1	A1
A1	C2	A1
A1	A1	A1
A1	C4	A1
A1	A1	A1

G2	G2	G2
C5	A4	G2
G2	G2	G2
B3	E2	G2
G2	G2	G2



Co-funded by the
Erasmus+ Programme
of the European Union



FINAL VIDEO

Click [here](#) to access the video.

